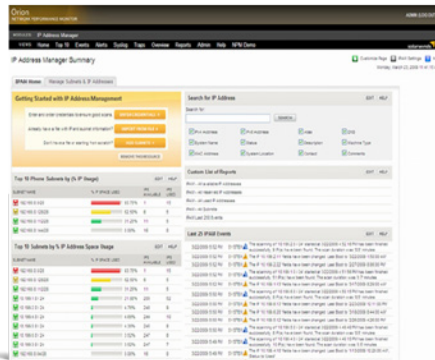


## Centralized IP Address Management That Doesn't Break the Bank

*“Love It, Love It,  
Love It.”*

- pguenther,  
posted on *thwack*,  
SolarWinds community site



Today's dynamic networks require you to keep a vigilant eye on your IP address space. Complex spreadsheets and home-grown solutions just don't cut it anymore — you need a solution that can give you comprehensive IP space visibility and help you prevent IP address conflicts from taking down network devices.

As the newest module of Orion Network Performance Monitor (NPM), Orion IP

Address Manager (IPAM) allows you and your team to ditch your spreadsheets for an easy-to-use, centralized IP address management solution that doesn't break the bank. Orion IPAM periodically scans the network for IP address changes and maintains a dynamic list of IP addresses, including non-responsive addresses. Orion IPAM leverages Orion NPM's intuitive point-and-click interface to allow engineers to easily drill down to investigate IP address space issues.

This makes it easy for you to plan for network growth, to ensure IP space usage meets corporate standards, and to reduce IP conflicts. Plus, you can easily coordinate team access to your IP space and track who made changes.

### Orion IPAM Highlights:

- **Manage your entire IP infrastructure** from an intuitive web console
- **Import multiple subnets simultaneously** using bulk subnet import.
- **Prevent your subnets and DHCP scopes from filling up** with preventative alert notification
- Periodically scan your network and **Microsoft® DHCP servers** for IP address changes
- **Create, schedule, and share reports** on the IP address space percent utilization
- Coordinate team access with **role-based access control** and track who made each change
- Scan and **track unused IP addresses for free** and tag them as available
- Easily **identify non-responsive IP addresses** to optimize your IP space

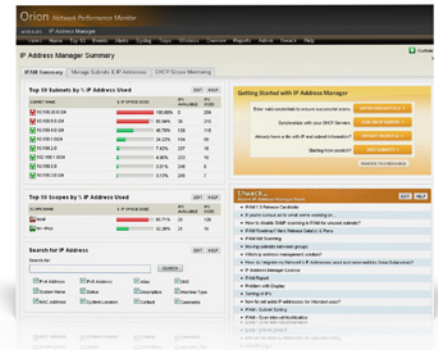
## Orion IPAM Features

### Scheduled Scanning

Not all subnets are the same, so why would you scan each of them with the same settings? Orion IPAM allows you to periodically scan a subnet as frequent as 10 minutes to as slowly as 7 days. Moreover, you can schedule each scan independently by subnet so your mobile subnets will always be updated without rescanning those subnets with mostly static IPs.

### Preventative Alerting

Orion IPAM enables you to quickly and easily configure powerful alert engines to respond to hundreds of different scenarios, including multiple condition checks of your IP address space. Rest assured that you'll be notified before a subnet or DHCP scope is full; alerts help you recognize and correct issues before your users experience fault or performance issues. Additionally, Orion IPAM can automatically escalate alerts until a problem is resolved or acknowledged.



### DHCP Server Integration

DHCP server integration in Orion IPAM allows customers to add Microsoft DHCP servers and define a scanning frequency to automatically add new scopes and subnets into the Orion database. This time-saving feature will ensure you have a single updated view into your IP address space. Combined with Orion IPAM's powerful alerting, you can receive quick notification of any subnets or DHCP scopes that are approaching capacity.

### Subnet & Scope Snapshot

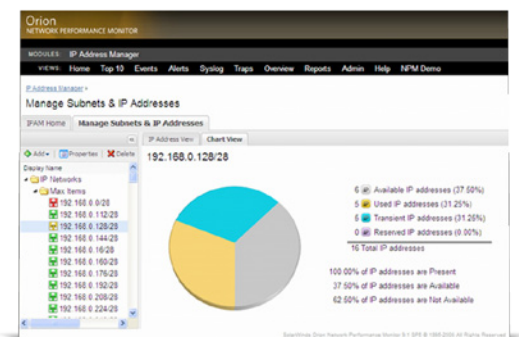
Managing a handful of IP addresses is easy, but toss in several hundred, let alone, several thousand IP addresses and you've got a real IP space nightmare. How do you keep tabs on each subnet to make sure an IP conflict is not looming around the corner? Rest assured that despite having multiple engineers adding and removing IP addresses, you'll always have an easy view into each of your subnets to ensure it is optimally allocated.

### Free Unlimited IP Scanning

While other IPAM solutions charge you to monitor your entire IP addresses range, Orion IPAM only counts your used/managed IP addresses. We'll scan & track your unused IP addresses for free and tag them as available, so you'll still know their status, but we won't count unused IPs towards your license count!

*"It's a **great tool**, easy to manage and can't be messed up by anyone unlike traditional spreadsheets. Great job, **well done**."*

suarez33,  
review on solarwinds.com



### Scan Segmentation

While we think you'll love Orion IPAM's easy-to-use interface for managing your IP space, we recognize that some IPs just want to be left alone. With Scan Segmentation, Orion IPAM allows you to selectively pick which IPs you want to manually manage and which ones you want automatically managed. That way, you can manually manage IPs in your DMZ where ICMP and SNMP are not allowed, but still automatically manage your dynamic mobile IPs.

model	managed ips:
IP1000	Up to 1024 IPs or one /22
IP4000	Up to 4096 IPs or one /20
IP16000	Up to 16384 IPs or one /18
IPX	Unlimited IPs

### Orion NPM Modules:

- Application Performance Monitor
- IP Address Manager
- IP SLA Manager
- NetFlow Traffic Analyzer

Orion NPM modules extend the capabilities of Orion NPM to network traffic analysis, IP address management, VoIP monitoring, and application and server monitoring.

### System Requirements

As an Orion module, Orion IPAM requires an installation of Orion Network Performance Monitor. The system requirements for Orion IPAM do not exceed Orion NPM requirements.



Tel: 0845 8331185  
[www.prosperon.co.uk](http://www.prosperon.co.uk)  
<mailto:sales@prosperon.co.uk>

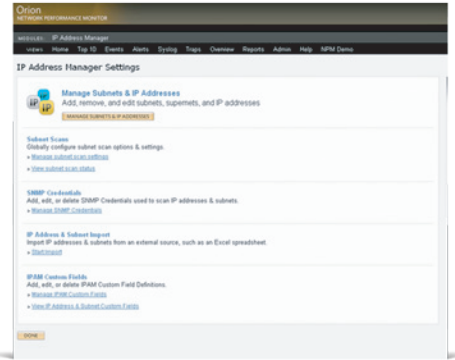


### Subnet Allocation Wizard

Orion IPAM provides a Subnet Allocation Wizard to help you efficiently organize your managed IP address space into subnets that are sized appropriately for the extent and traffic of your network. Simply enter your supernet and subnet size and the wizard generates the subnets.

### Detailed Event Recording

Managing an IP space by yourself is challenging, but when you have a team of network engineers, the real fun starts! How can you make sure each engineer is aware of each other's changes? How can you check who made an IP change or modified a subnet? With spreadsheets, all bets are off, and you are simply at the mercy of each person notifying everyone else when changes are made. With Orion IPAM, each IPAM-related change is recorded in detail so that other users can simply check an activity log. You can relax, knowing that your team of network engineers will spend their time managing the network instead of managing an IP address spreadsheet!



### User-Defined Grouping

Orion IPAM provides groups to help your team organize IP space. The drag-and-drop user interface makes it easy to immediately create groups that may contain any number of other groups, supernets, subnets, or individual IP addresses. Using Orion IPAM, you can group all the various network components related to each department of each branch office into its own group. This allows a local branch network engineer to manage his/her own IP addresses without impacting other branch offices.

### Global Search

From Orion IPAM's advanced web console, you can perform a global search for any specific IP address or wildcard expression with a partial IP address. Within seconds, an interactive list returns allowing you to link directly to manage the subnet for that specific IP address. Additionally, you can edit IP address properties and set the status of the selected IP address.

### Engineer's Toolset Integration

If you have both SolarWinds Engineer's Toolset and Orion IPAM, you can leverage the functionality of the powerful troubleshooting tools in Engineer's Toolset directly from Orion IPAM simply by using the "right-click" mouse option or by selecting a tool from the Orion IPAM toolbar.

### Flexible Reporting

Using the powerful capabilities of Orion Report Writer, IPAM data can be easily extracted and presented in a useful format. Orion Report Writer allows you to format your data exactly to your specifications and preview reports before you display them. When you have finished editing your reports, you can use the scheduler tool to schedule distribution of reports via email and to enable people to view them through the Orion web console.

For additional information, please contact SolarWinds at 866.530.8100 or e-mail [sales@solarwinds.com](mailto:sales@solarwinds.com). To locate an international reseller near you, visit [www.solarwinds.com/distributor/locator.html](http://www.solarwinds.com/distributor/locator.html)